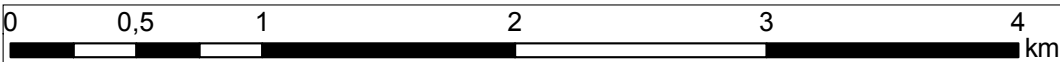


Legend

- Section No. 1
- Section No. 2
- Section No. 3
- Potential flood risk areas
- Areas excluded from potential flood risk



Appendix 8: Map with location of the Contract in reference to areas excluded from land of potential flood hazard
(The map does not present the remaining embankments of the Vistula River, for which sections 1, 2 and 3 – being the subject of the study – form a completion of the Cracow's flood protection system)

INDEX OF SHEETS

Contract 3A.1 Modernization of Vistula embankments in Cracow
Works Contract 3A.1/1

- Section 1** - The left embankment of the Vistula river from Wanda bridge to the Przewóz barrage, including the backwater embankment of the Dłubnia river - Sheet 4, 5, 6
- Section 2** - The left embankment of the Vistula river from Przewóz barrage to Suchy Jar - Sheet 7, 8
- Works Contract 3A.1/2**
- Section 3** - The right embankment of the Vistula river from Dabie to the Przewóz barrage - Sheet 1, 2, 3, 4, 6, 7



Legend

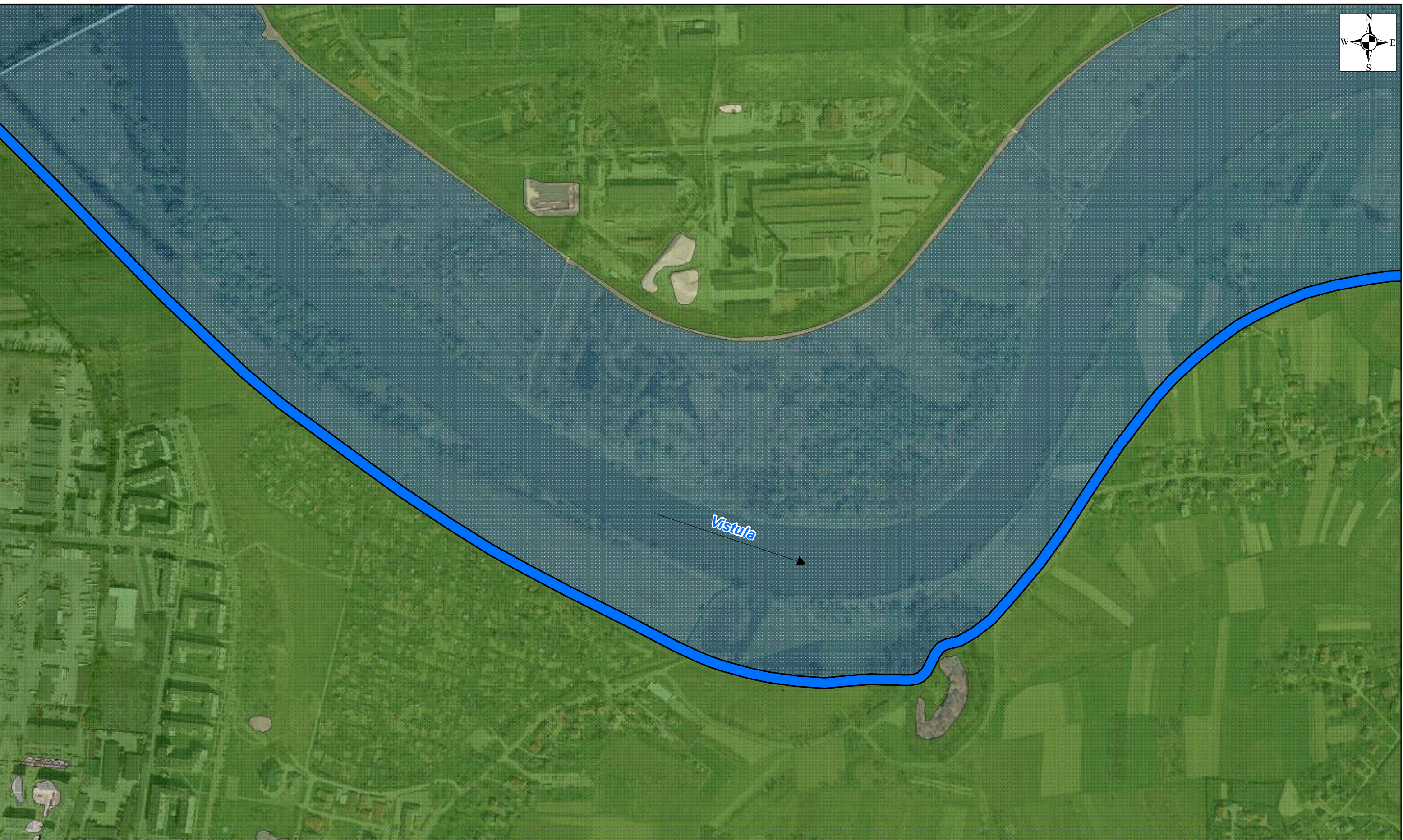
- Section No. 1
- Section No. 2
- Section No. 3
- Potential flood risk areas
- Areas excluded from potential flood risk

0 0,25 0,5 1 km

Appendix 8: Map with location of the Contract in reference to areas excluded from land of potential flood hazard
(The map does not present the remaining embankments of the Vistula River, for which sections 1, 2 and 3 – being the subject of the study – form a completion of the Cracow's flood protection system)

SHEET 1

Contract 3A.1 Modernization of Vistula embankments in Cracow
Works Contract 3A.1/1
Section 1 - The left embankment of the Vistula river from Wanda bridge to the Przewóz barrage, including the backwater embankment of the Dłubnia river - Sheet 4, 5, 6
Section 2 - The left embankment of the Vistula river from Przewóz barrage to Suchy Jar - Sheet 7, 8
Works Contract 3A.1/2
Section 3 - The right embankment of the Vistula river from Dąbie to the Przewóz barrage - Sheet 1, 2, 3, 4, 6, 7



Legend

- Section No. 1
- Section No. 2
- Section No. 3
- Potential flood risk areas
- Areas excluded from potential flood risk

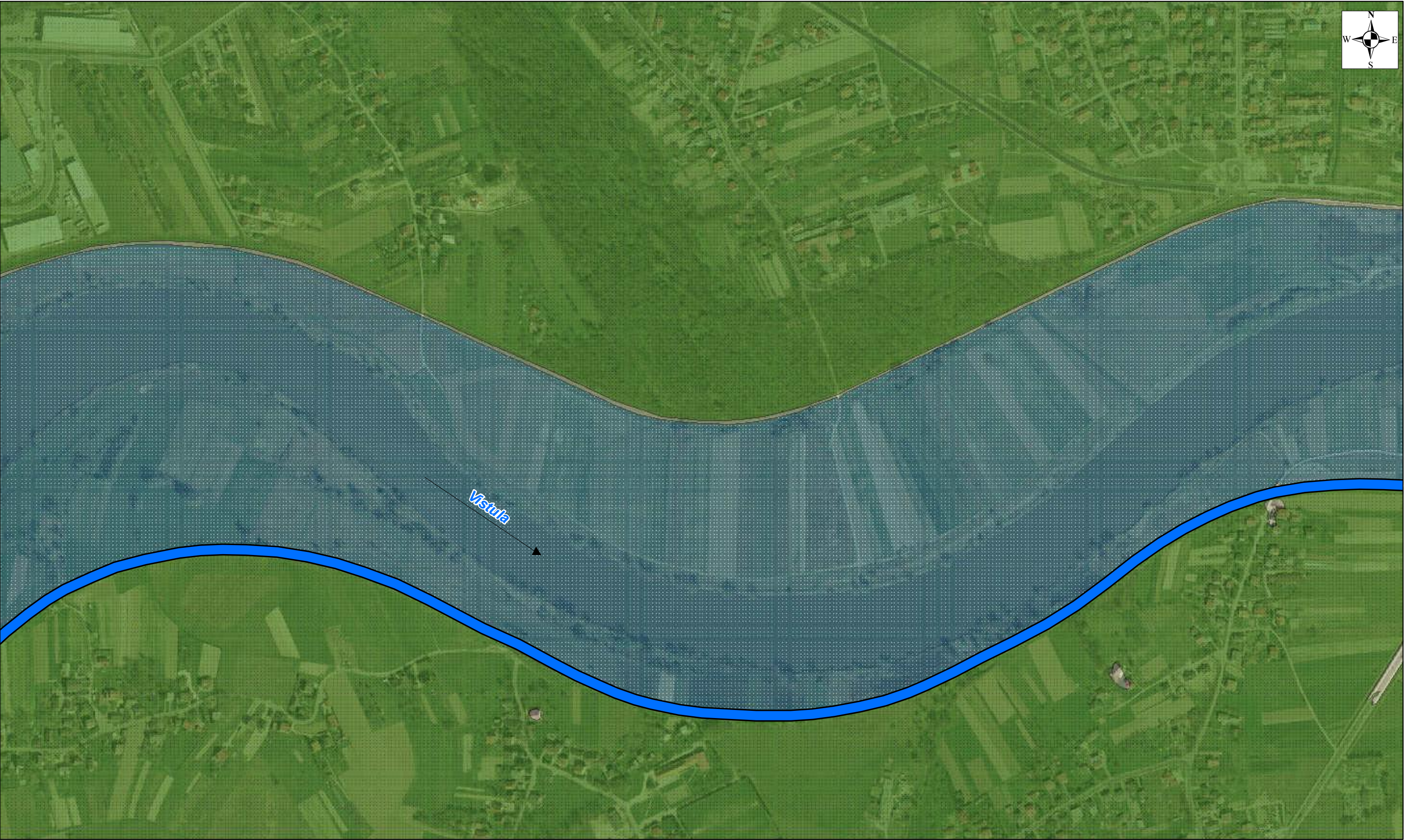
Appendix 8: Map with location of the Contract in reference to areas excluded from land of potential flood hazard

(The map does not present the remaining embankments of the Vistula River, for which sections 1, 2 and 3 – being the subject of the study – form a completion of the Cracow's flood protection system)

SHEET 2

00,250,51km

Contract 3A.1 Modernization of Vistula embankments in Cracow
Works Contract 3A.1/1
Section 1 - The left embankment of the Vistula river from Wanda bridge to the Przewóz barrage, including the backwater embankment of the Dłubnia river - Sheet 4, 5, 6
Section 2 - The left embankment of the Vistula river from Przewóz barrage to Suchy Jar - Sheet 7, 8
Works Contract 3A.1/2
Section 3 - The right embankment of the Vistula river from Dabie to the Przewóz barrage - Sheet 1, 2, 3, 4, 6, 7



Legend

Section No. 1

Section No. 2

Section No. 3

Potential flood risk areas

Areas excluded from potential flood risk

0

0,25

0,5

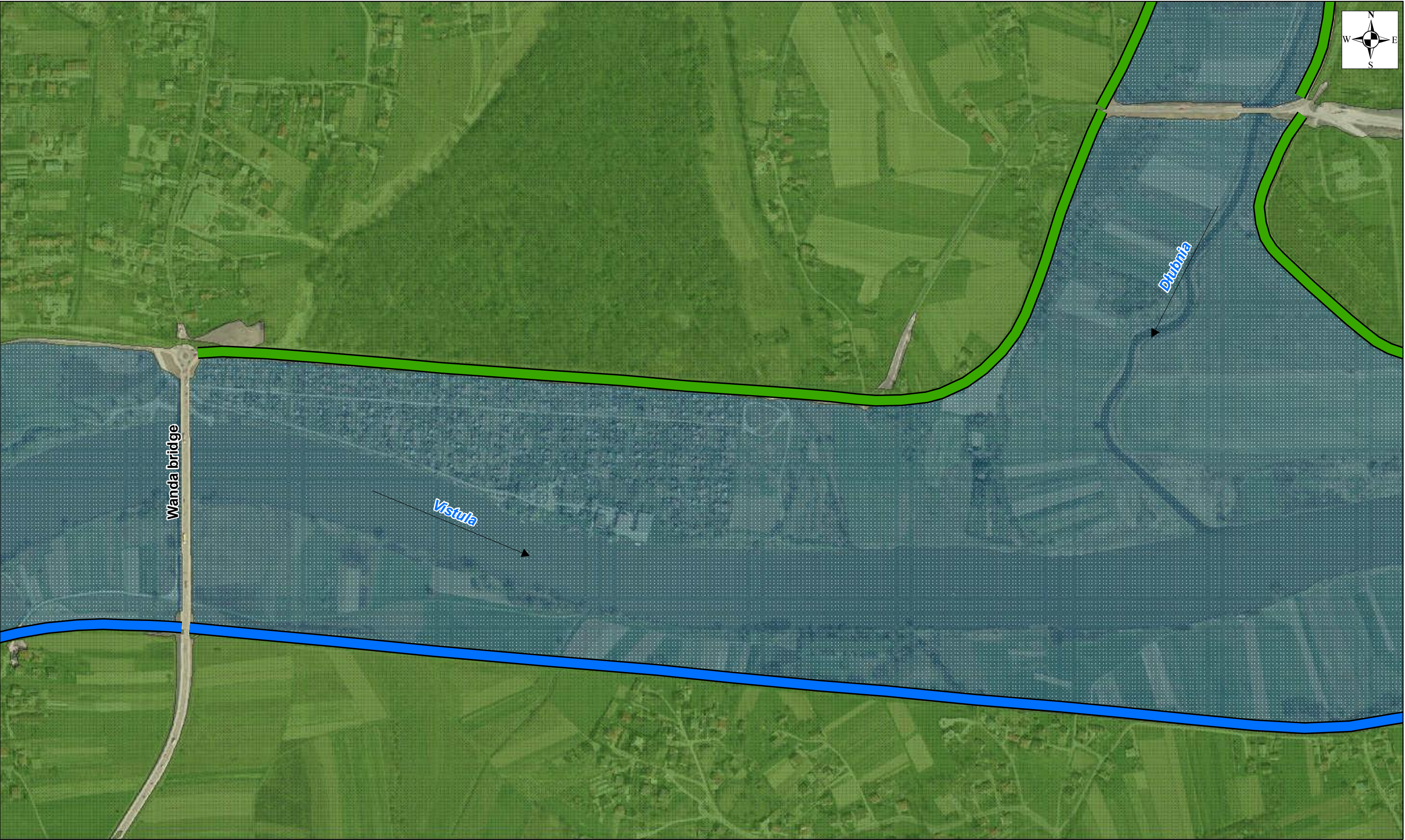
1

km

Appendix 8: Map with location of the Contract in reference to areas excluded from land of potential flood hazard
(The map does not present the remaining embankments of the Vistula River, for which sections 1, 2 and 3 – being the subject of the study – form a completion of the Cracow's flood protection system)

SHEET 3

Contract 3A.1 Modernization of Vistula embankments in Cracow
Works Contract 3A.1/1
Section 1 - The left embankment of the Vistula river from Wanda bridge to the Przewóz barrage, including the backwater embankment of the Dłubnia river - Sheet 4, 5, 6
Section 2 - The left embankment of the Vistula river from Przewóz barrage to Suchy Jar - Sheet 7, 8
Works Contract 3A.1/2
Section 3 - The right embankment of the Vistula river from Dabie to the Przewóz barrage - Sheet 1, 2, 3, 4, 6, 7



Legend

Section No. 1

Section No. 2

Section No. 3

Potential flood risk areas

Areas excluded from potential flood risk

0

0,25

0,5

1

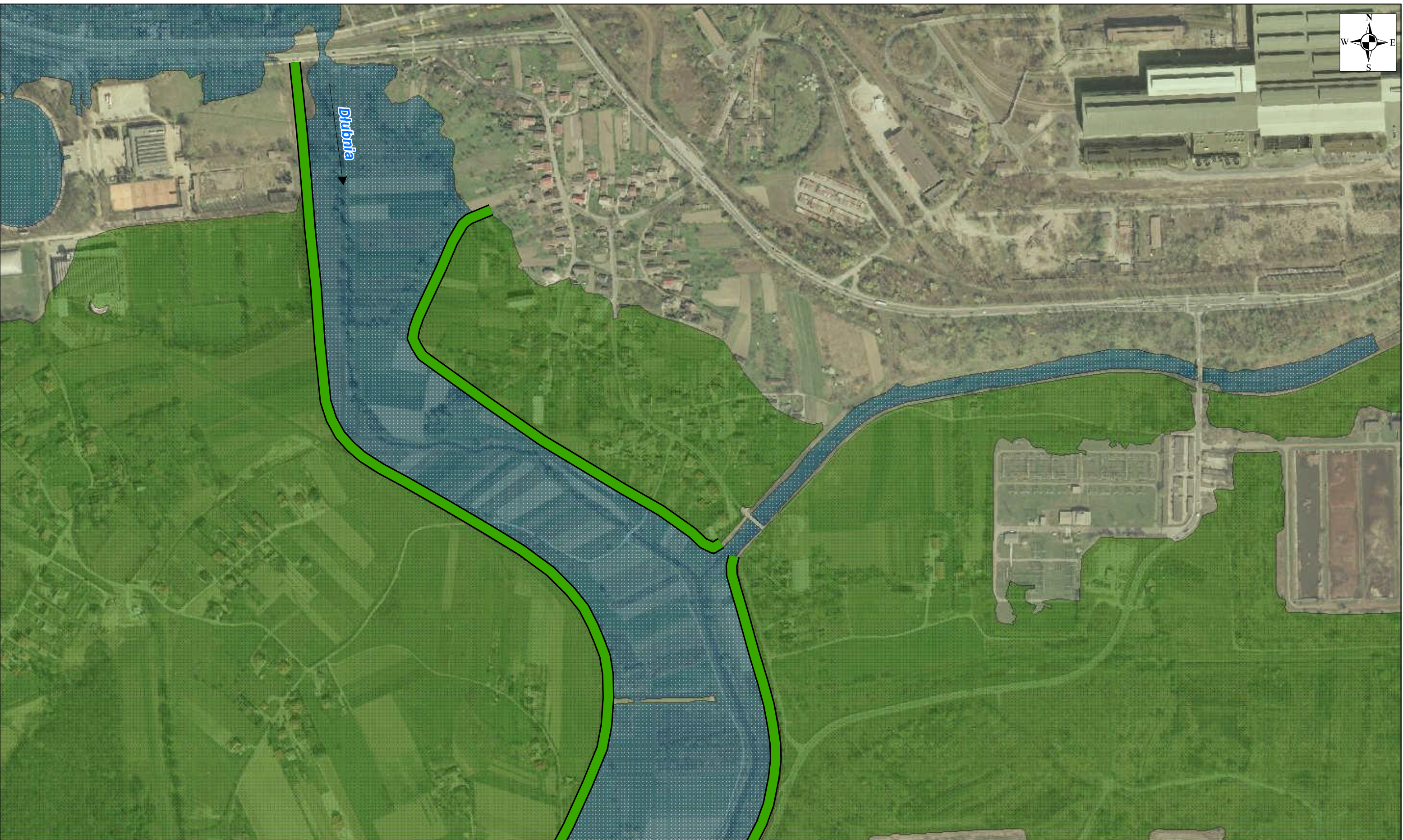
km

Appendix 8: Map with location of the Contract in reference to areas excluded from land of potential flood hazard
(The map does not present the remaining embankments of the Vistula River, for which sections 1, 2 and 3 – being the subject of the study – form a completion of the Cracow's flood protection system)

SHEET 4

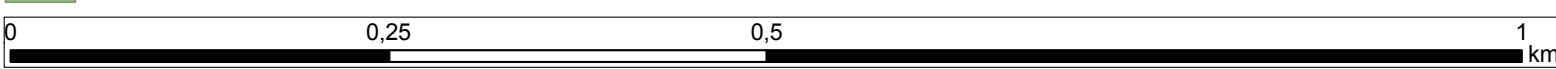
- Contract 3A.1 Modernization of Vistula embankments in Cracow**
Works Contract 3A.1/1
Section 1 - The left embankment of the Vistula river from Wanda bridge to the Przewóz barrage, including the backwater embankment of the Dłubnia river - Sheet 4, 5, 6
Section 2 - The left embankment of the Vistula river from Przewóz barrage to Suchy Jar - Sheet 7, 8

Works Contract 3A.1/2
Section 3 - The right embankment of the Vistula river from Dabie to the Przewóz barrage - Sheet 1, 2, 3, 4, 6, 7



Legend

- Section No. 1
- Section No. 2
- Section No. 3
- Potential flood risk areas
- Areas excluded from potential flood risk



Appendix 8: Map with location of the Contract in reference to areas excluded from land of potential flood hazard
(The map does not present the remaining embankments of the Vistula River, for which sections 1, 2 and 3 – being the subject of the study – form a completion of the Cracow's flood protection system)

SHEET 5

Contract 3A.1 Modernization of Vistula embankments in Cracow
Works Contract 3A.1/1
Section 1 - The left embankment of the Vistula river from Wanda bridge to the Przewóz barrage, including the backwater embankment of the Dłubnia river - Sheet 4, 5, 6
Section 2 - The left embankment of the Vistula river from Przewóz barrage to Suchy Jar - Sheet 7, 8
Works Contract 3A.1/2
Section 3 - The right embankment of the Vistula river from Dabie to the Przewóz barrage - Sheet 1, 2, 3, 4, 6, 7



Legend

- Section No. 1
- Section No. 2
- Section No. 3
- Potential flood risk areas
- Areas excluded from potential flood risk

0

0,25

0,5

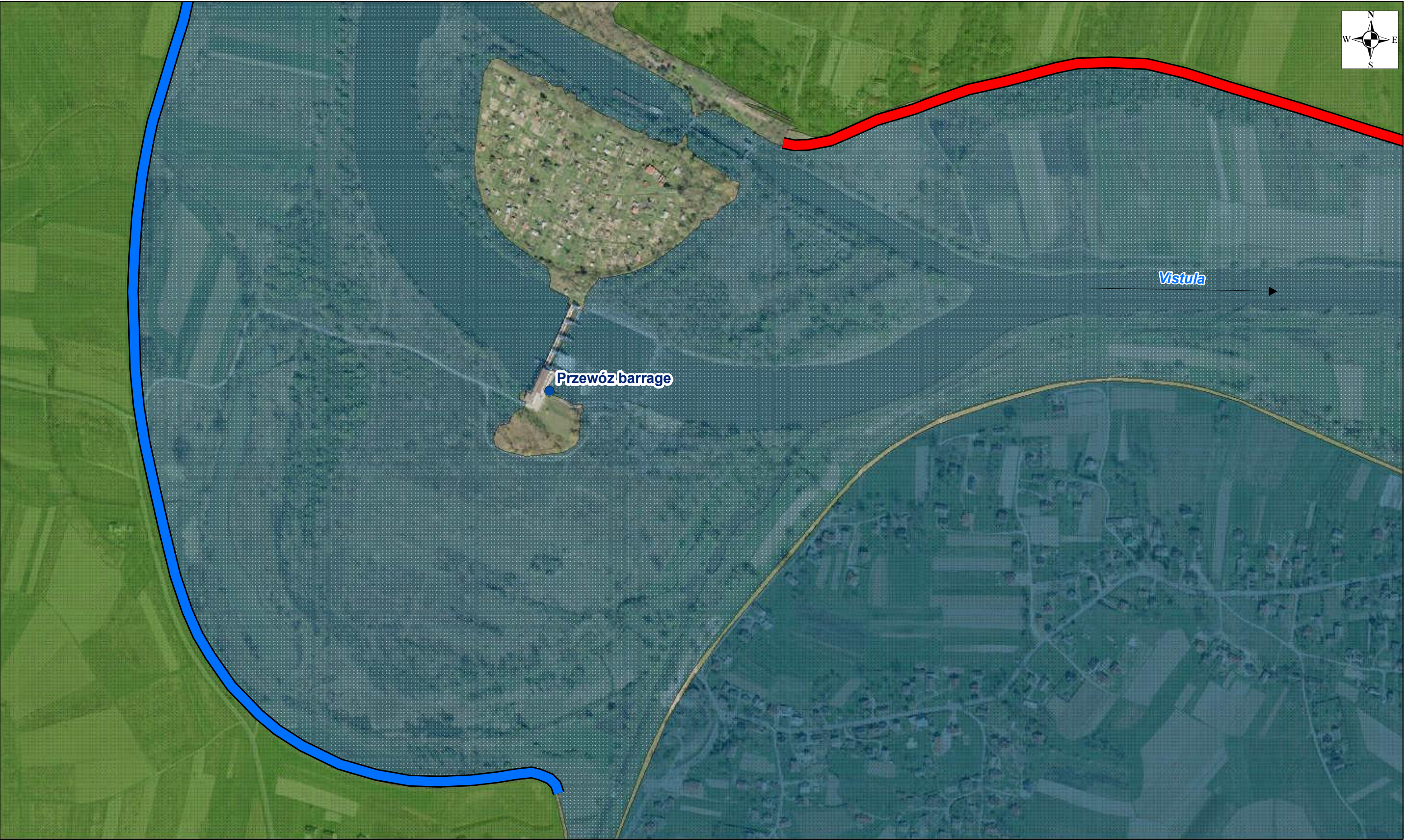
1

km

Appendix 8: Map with location of the Contract in reference to areas excluded from land of potential flood hazard
(The map does not present the remaining embankments of the Vistula River, for which sections 1, 2 and 3 – being the subject of the study – form a completion of the Cracow's flood protection system)

SHEET 6

Contract 3A.1 Modernization of Vistula embankments in Cracow
Works Contract 3A.1/1
Section 1 - The left embankment of the Vistula river from Wanda bridge to the Przewóz barrage, including the backwater embankment of the Dłubnia river - Sheet 4, 5, 6
Section 2 - The left embankment of the Vistula river from Przewóz barrage to Suchy Jar - Sheet 7, 8
Works Contract 3A.1/2
Section 3 - The right embankment of the Vistula river from Dabie to the Przewóz barrage - Sheet 1, 2, 3, 4, 6, 7



Legend

- Section No. 1
- Section No. 2
- Section No. 3
- Potential flood risk areas
- Areas excluded from potential flood risk

Appendix 8: Map with location of the Contract in reference to areas excluded from land of potential flood hazard
(The map does not present the remaining embankments of the Vistula River, for which sections 1, 2 and 3 – being the subject of the study – form a completion of the Cracow's flood protection system)






SHEET 7

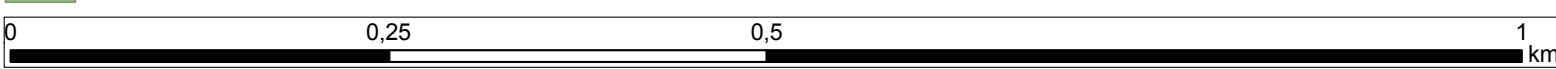
0 0,25 0,5 1 km

Contract 3A.1 Modernization of Vistula embankments in Cracow
Works Contract 3A.1/1
Section 1 - The left embankment of the Vistula river from Wanda bridge to the Przewóz barrage, including the backwater embankment of the Dłubnia river - Sheet 4, 5, 6
Section 2 - The left embankment of the Vistula river from Przewóz barrage to Suchy Jar - Sheet 7, 8
Works Contract 3A.1/2
Section 3 - The right embankment of the Vistula river from Dabie to the Przewóz barrage - Sheet 1, 2, 3, 4, 6, 7



Legend

-  Section No. 1
-  Section No. 2
-  Section No. 3
-  Potential flood risk areas
-  Areas excluded from potential flood risk



Appendix 8: Map with location of the Contract in reference to areas excluded from land of potential flood hazard
(The map does not present the remaining embankments of the Vistula River, for which sections 1, 2 and 3 – being the subject of the study – form a completion of the Cracow's flood protection system)

SHEET 8

Contract 3A.1 Modernization of Vistula embankments in Cracow
Works Contract 3A.1/1

- Section 1** - The left embankment of the Vistula river from Wanda bridge to the Przewóz barrage, including the backwater embankment of the Dłubnia river - Sheet 4, 5, 6
- Section 2** - The left embankment of the Vistula river from Przewóz barrage to Suchy Jar - Sheet 7, 8

Works Contract 3A.1/2

- Section 3** - The right embankment of the Vistula river from Dabie to the Przewóz barrage - Sheet 1, 2, 3, 4, 6, 7